



Wolverine

SKID STEER ATTACHMENT

PRODUCT MANUAL

V2023.9.25

3 BLADES MOWER MANUAL

Model: TBM-12-78W



**FOR MORE INFO
SCAN HERE**



Content

I. Preface	1
II. Security statements	2
III. Warning labels	3
IV. Technical Parameters	5
V. Installation	6
Manually controlled quick-change mechanism	6
Hydraulic Connection	8
VI. Operation	9
Basic operation	9
Notes	10
VII. Maintenance	11

I. Preface

This product is carefully designed and manufactured to provide you with years of reliable service. Only minimal maintenance (such as cleaning and lubrication) is required to keep it in top working condition. Be sure to follow all maintenance procedures and safety precautions in this manual, as well as any safety stickers on the product and any equipment on which accessories are mounted.

This manual is designed to help you do a better,safer job. Please read this manual carefully and familiarize yourself with its contents. Do not allow anyone to operate this equipment without reading this manual.

The illustrations and data used in this manual are current at the time of printing (according to information available to us), but we reserve the right to redesign and change attachments as necessary without notice. Prior to operation the primary responsibility for the safety of this equipment falls on the operator. Please ensure that only trained personnel who have read and understood this manual operate the equipment.

If you do not understand this manual or the features, please contact your local authorized dealer or the manufacturer for further assistance. Make this manual available to new owners and new operators for reference.

II. Security statements

Improper installation, operation or maintenance of this equipment can result in serious personal injury or even death.

Before beginning installation, operation or maintenance, operators and maintenance personnel should carefully read this manual and all manuals pertaining to this equipment and the prime mover. Follow all safety instructions in this manual and the prime mover manual.

Read and understand all safety statements before operating or using this equipment, read all warning labels and safety statements in manuals. Know and follow all regulations, local laws and other professional guidelines. Know and follow good working practices when assembling, maintaining, servicing, installing, disassembling, or operating this equipment.

Learn about the performance, size of your device before operation. Visually inspect the equipment prior to start-up and it is strictly forbidden to operate equipment in a abnormal working condition with all safety devices intact. Check all hardware to ensure tightness. Ensure that all latches, pins and connections are properly installed and secured. Remove and replace any damaged or excessively worn parts. Make sure all safety decals are in place and legible. Keep warning labels clean and replace them when they are worn or difficult to read.

III. Warning labels

Position of Warning Label

Figure 1-1 is the location of the warning label. Warning labels are identified by their part number. The photo1-2 is the instruction of the warning labels. Use this information to buy new warning labels for replacing the damaged ones. Before handling attachments, be sure to read all warning labels which include the information you need to understand and the safety and life span of the attachment.

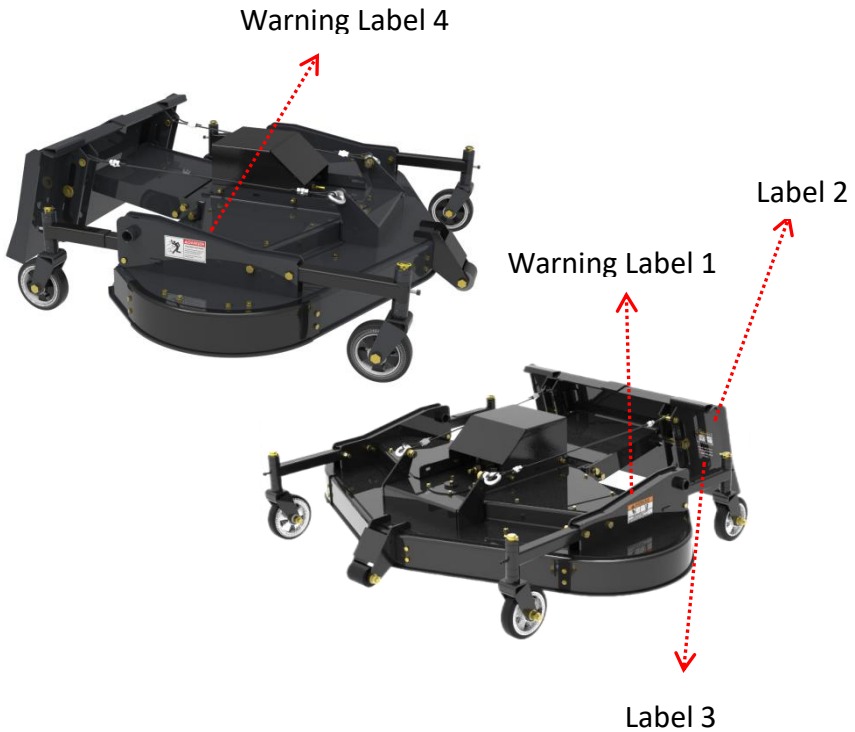
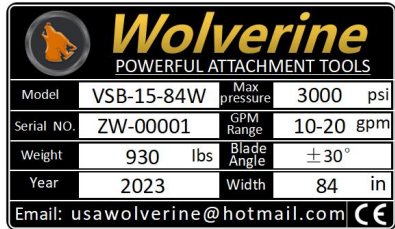


Figure 1-1

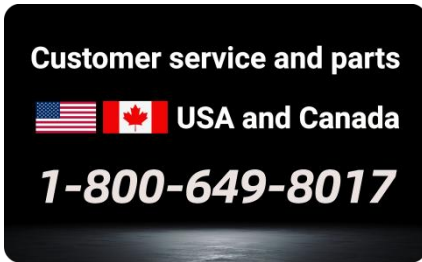
WOLVERINE INDUSTRY



Warning Label 1
Falling Blade Hazard



Label 2
Name Plate



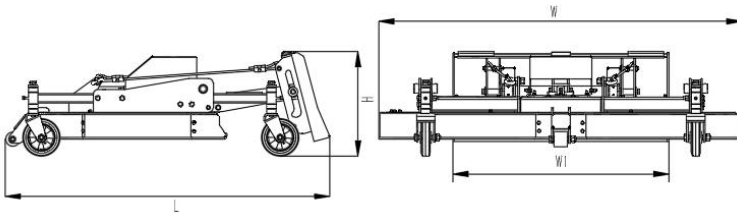
Label 3
After-sales Hotline



Warning Label 4
Flying Object Crash Hazard

Figure 1-2

IV. Technical Parameters



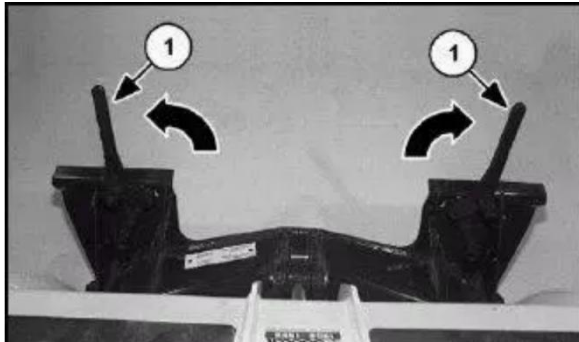
No.	Item	Parameter		Remark
	Model	72"		
		British Parameter	Metric Parameter	
1	Total Weight	1010 lbs	459 Kg	
2	Cutting Width W1	72 "	1820 mm	
3	Width W	76 "	1930 mm	
4	Height H	18.5 "	470 mm	
5	Length L	68 "	1730 mm	
6	Cutting Height Range	2-5.5 "	51-140 mm	
7	Quantity of Blades	3	3	
8	Stop Stroke	8.5 "	215 mm	
9	Max. Speed	17555 ft/min	5350 m/min	
10	Flow Range	15-20 Gpm	50-75 Lpm	
11	Main Shaft	Drive Shaft:3pcs, Drive by Belt		Need lubricating
12	Suitable Loader	Skid Steer Loader		

V. Installation

Please check the quick-change device and the box broom sweeper before installing the sweeper for use.

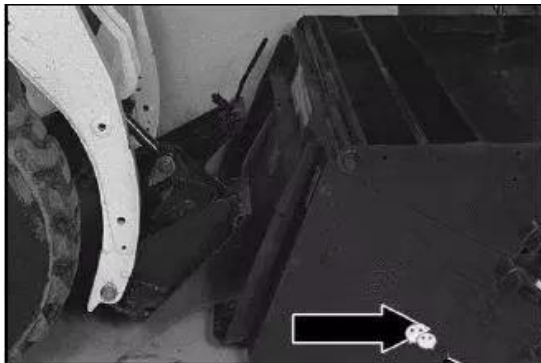
Manually controlled quick-change mechanism:

Pull the lever of quick-change mechanism fully open. (as shown below)



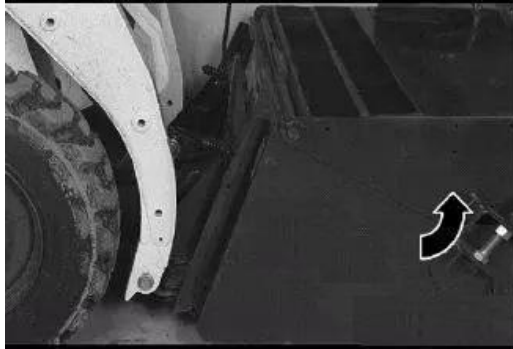
Enter the cab, fasten your seat belt, depress the safety lever and start the engine. Release the hand brake.

Tilt the quick-change device towards the front. Slowly move the machine forward so that the upper edge of the quick-change unit is fully integrated with the mounting flange of the sweeper. (as shown below)

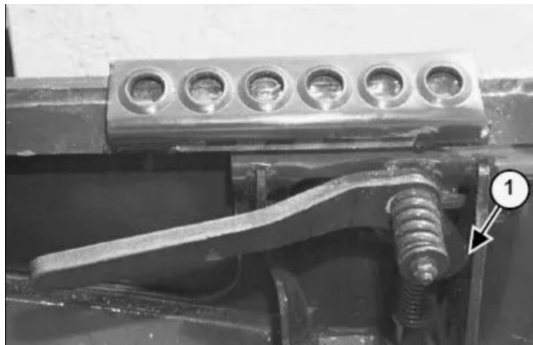


WOLVERINE INDUSTRY

Ensure that the lever of quick-change mechanism does not collide with the sweeper. Retract the quick-change unit backwards until the sweeper is completely off the ground. (as shown below)



Turn the engine off and leave the cab. Depress the quick-change lever until the locking pin is fully inserted into the pin hole in the mounting bracket to be locked (Figure below).

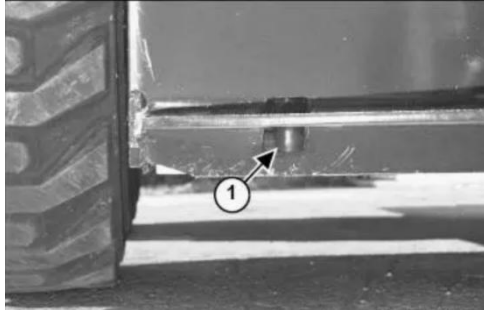


The locking pin of the quick-change device is fully inserted into the pin hole of the cleaner mounting bracket and locked, so that the cleaner is tightly bonded to the quick-change device.(Figure below)

WOLVERINE INDUSTRY

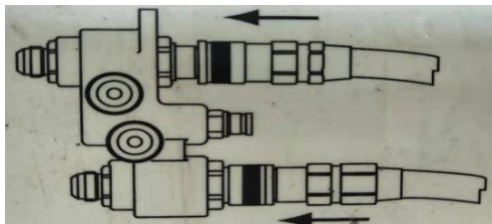
WARNING:

The locking pin of the quick-change device must be inserted into the pin hole of the attachment, and the lever must be fully depressed and locked. Failure to do so will cause the sweeper to fall off the loader, resulting in serious injury or even death.



Hydraulic connection:

Connect the high pressure hose and oil-return hose of the sweeper to the auxiliary hydraulic plug on the skid steer loader. Push the joint toward the lock position after alignment and insertion. (as shown below).



VI. Operation

Basic Operation:

1. Make sure that the oil line of the 3 blades mower is connected and the oil supply switch of the main engine is set off.
 2. Install the 3 Blades Mower on the loader and ensure that the connection is firm.
 3. Adjust the support of the four wheels of the 3 blades mower to adjust the height of the main body of the mower, and adjust the height of the cutting grass according to the need.
 4. Place the 3 blades mower on the lawn to be mowed to ensure that the machine is stable.
 5. Turn on the oil supply switch of the main engine, and gradually increase the rotation speed of engine to increase the oil amount to the hydraulic motor, so that the motor will reach the rated speed, and then the blade will be made contact with the lawn and trim.
 6. During the trimming process, maintain stable operation while forwarding at uniform speed, and maintain a proper trimming angle.
 7. After trimming, gradually reduce the working speed, and turn off the oil supply switch of the main engine when the skid steer loader stops.
- Clean the work area and 3 blades mower to ensure safety and hygiene.

WOLVERINE INDUSTRY

Notes:

1. Before operating the 3 blades mower, check whether there is a fault in the attachment, and then proceed to the next step
2. During the operation, pay attention to keep the working area clean to prevent debris from splashing.
3. Before continuous operation of the 3 blades mower for a long time, check the wear of the transmission belt.
4. Pay attention to the wear of the blade on the 3 blades mower. If the blade has been worn too much or cracks, it should be replaced in time.
5. When operating the 3 blades mower, it is necessary to keep focus and avoid distraction and fatigue operation, so as to avoid accidents.
6. When using the 3 blades mower, please follow the operating rules and illegal operation and overload use are prohibited.

WARNING: Please note that the above are general operation and precautions, the specific operation and safety requirements may vary depending on the model of the mower and the use environment. Before using it, it is recommended to carefully read and follow the relevant safety regulations.

VII. Maintenance

Regular maintenance is key to extending life span of the equipment and safe operation. Maintenance requirements have been reduced to an absolute minimum. However, it is important that these maintenance functions are performed as described below.

No.	Item	Daily (Per 8 Hours)	Refer to manual for prime power
1	Clean off any dirt and grease that may have accumulated on the 3 blades mower.	✓	
2	Check the wear of blades.	✓	
3	Check if hydraulic system is leaking and tighten it if necessary. Inspect for damage and replace as needed.	✓	
4	Grease fittings	✓	
5	Check if the hydraulic system of prime mover has sufficient oil.	✓	
6	Check whether the hardware is missing or loose. Replace or tighten it if necessary.	✓	
7	Check for missing or damaged warning decals and replace them if necessary.	✓	
8	Clean the air filter for prime mover .		✓

WARNING: Hydraulic oil/diesel fuel spilled under pressure can penetrate the skin and cause serious injury. Fluid spilling from a very small hole is almost invisible. Use a piece of cardboard or wood, not your hands, to look for suspicious leaks.



Wolverine

Tel: 1-800-649-8017

Business: sales@usawolverine.com

AS service: service@usawolverine.com

Website: www.usawolverine.com

WOLVERINE ATTACHMENT